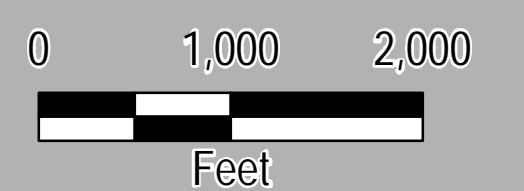
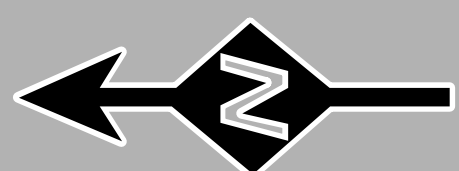


Legend

- Mile Post - Whole
 - ▼ Utility Crossing (Approximate)
 - Proposed Overland Cable
 - - - Proposed Lake HDD
- Proposed Lake Cable Construction Method**
- - - Diver Lay Installation
 - - - Install on Bottom
 - - - Jet Plow Installation
 - - - Shear Plow Installation
- Proposed Lake Cable Construction Method**
- - - VT Town Boundary (VCGI)
 - - - NY State Boundary (NY GIS Program Office)
 - Wildlife Management Areas
 - Public & Conserved Lands
 - Natural Areas (ANR)
- NHI Element Occurrence (VTFW)**
- RTE's
 - Natural Community

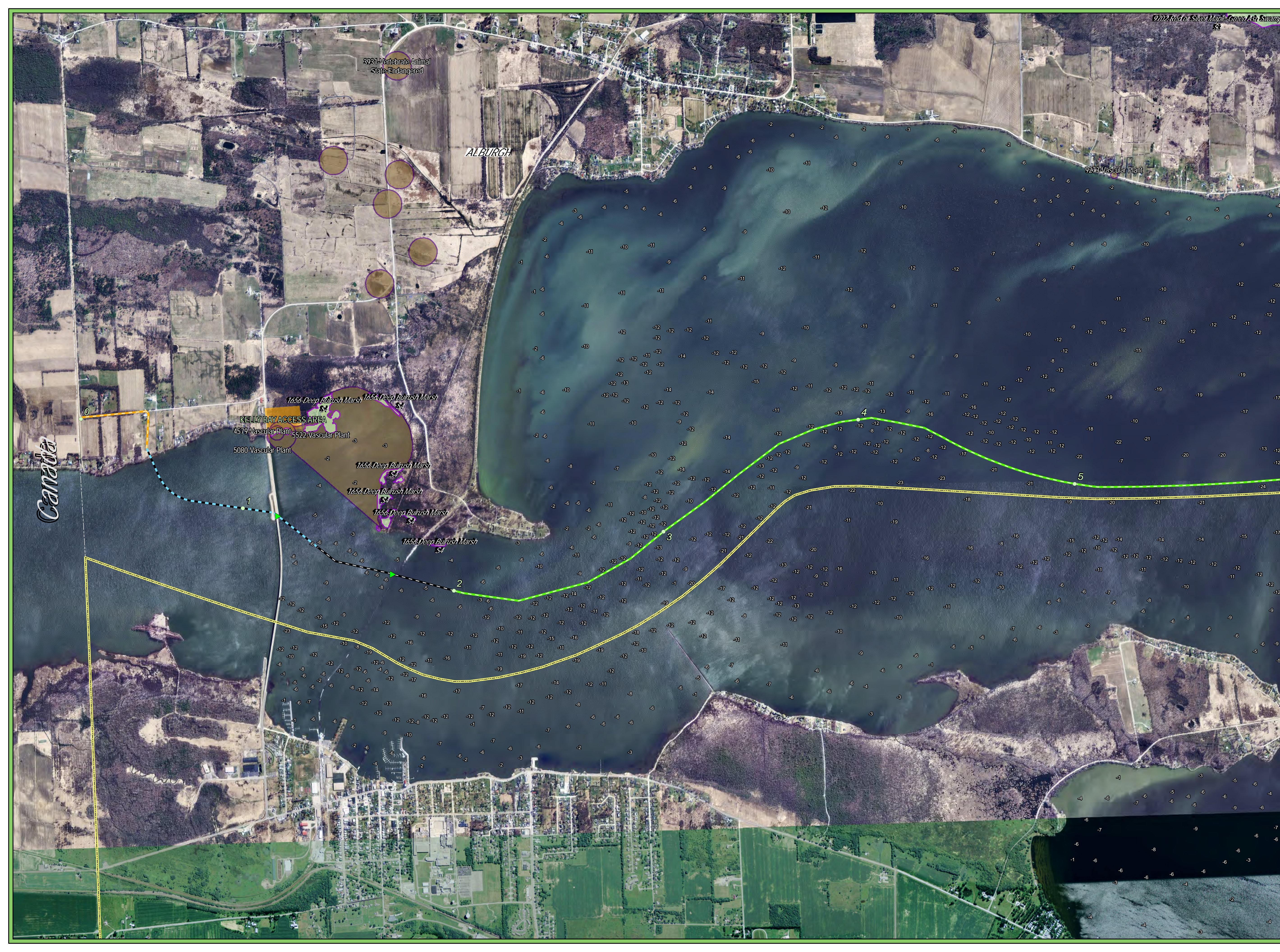
Sources: ESRI, TRC, HDR, VHB, TDI New England, VCGI

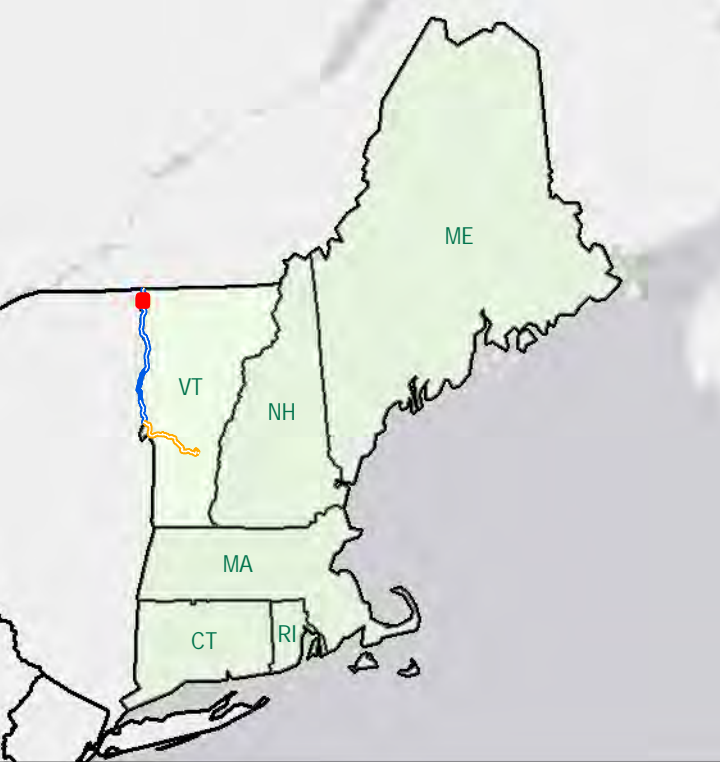


New England Clean Power Link

Lake Segment
 Grand Isle, Chittenden, Addison,
 and Rutland Counties

L-1

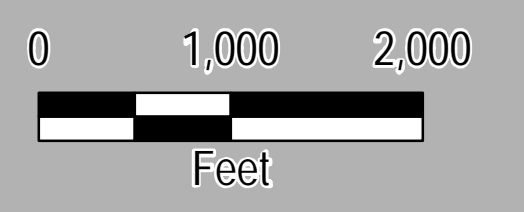
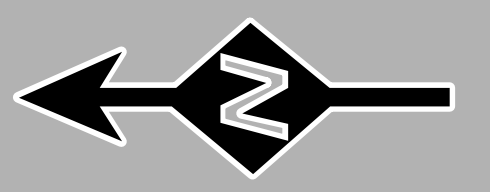




Legend

- Mile Post - Whole
- Utility Crossing (Approximate)
- Proposed Overland Cable
- Proposed Lake HDD
- Proposed Lake Cable Construction Method**
 - Diver Lay Installation
 - Install on Bottom
 - Jet Plow Installation
 - Shear Plow Installation
- VT Town Boundary (VCGI)
- NY State Boundary (NY GIS Program Office)
- Wildlife Management Areas
- Public & Conserved Lands
- Natural Areas (ANR)
- NHI Element Occurrence (VTFW)**
 - RTE's
 - Natural Community

Sources: ESRI, TRC, HDR, VHB, TDI New England, VCGI

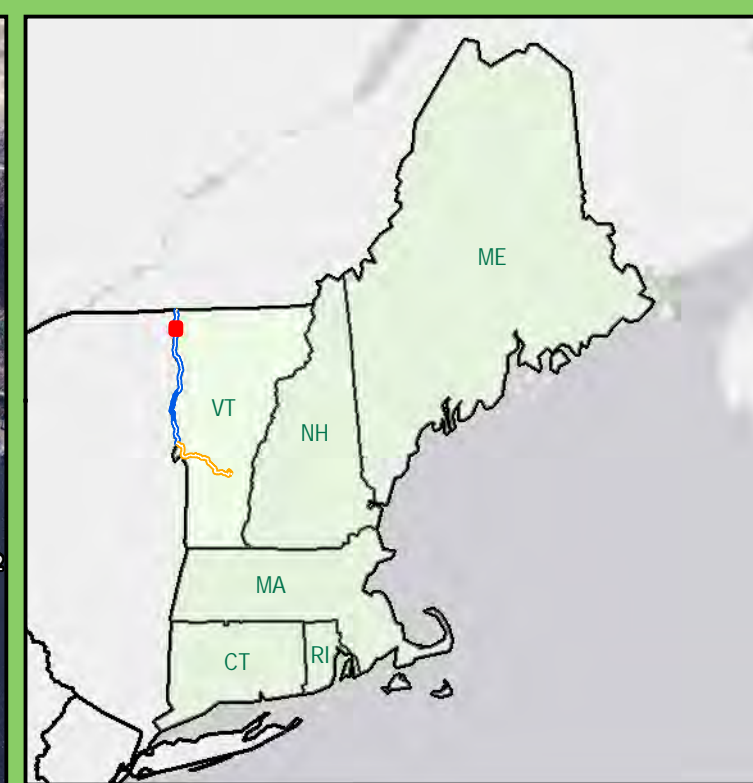


New England Clean Power Link

Lake Segment
Grand Isle, Chittenden, Addison, and Rutland Counties

L-2





Legend

- Mile Post - Whole
- ▼ Utility Crossing (Approximate)
- Proposed Overland Cable
- Proposed Lake HDD

Proposed Lake Cable Construction Method

- Diver Lay Installation
- Install on Bottom
- Jet Plow Installation
- Shear Plow Installation

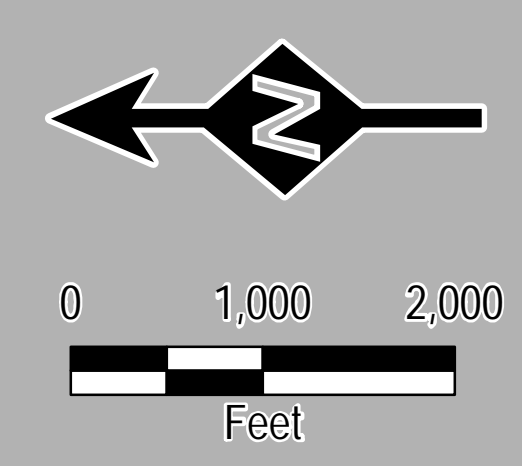
Proposed Lake Cable Construction Method

- VT Town Boundary (VCGI)
- NY State Boundary (NY GIS Program Office)
- ▨ Wildlife Management Areas
- Public & Conserved Lands
- ▨ Natural Areas (ANR)

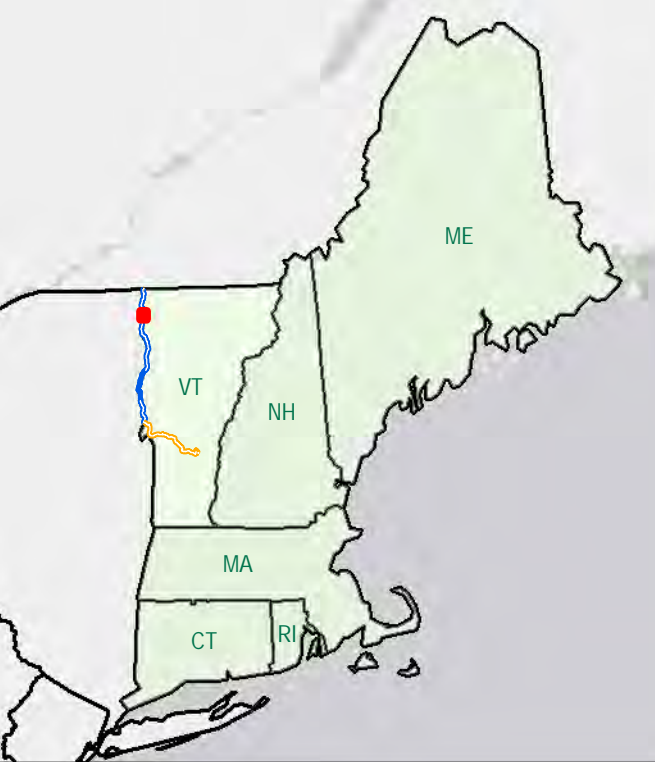
NHI Element Occurrence (VTFW)

- RTE's
- Natural Community

Sources: ESRI, TRC, HDR, VHB, TDI New England, VCGI



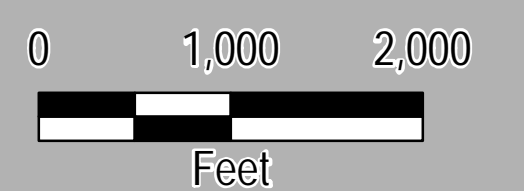
New England Clean Power Link
 Lake Segment
Grand Isle, Chittenden, Addison, and Rutland Counties
 L-3



Legend

- Mile Post - Whole
- ▼ Utility Crossing (Approximate)
- Proposed Overland Cable
- Proposed Lake HDD
- Proposed Lake Cable Construction Method**
- Diver Lay Installation
- Install on Bottom
- Jet Plow Installation
- Shear Plow Installation
- VT Town Boundary (VCGI)
- NY State Boundary (NY GIS Program Office)
- Wildlife Management Areas
- Public & Conserved Lands
- Natural Areas (ANR)
- NHI Element Occurrence (VTFW)**
- RTE's
- Natural Community

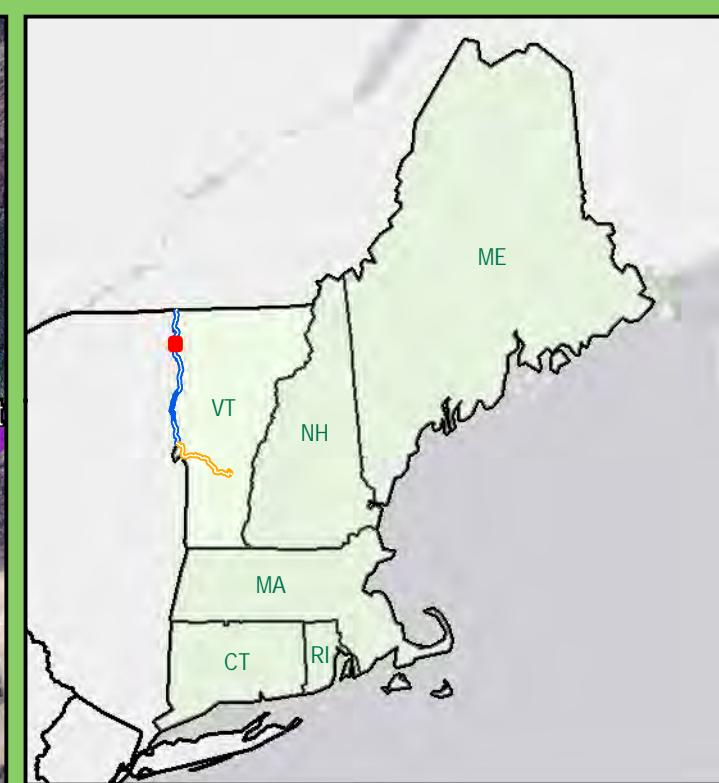
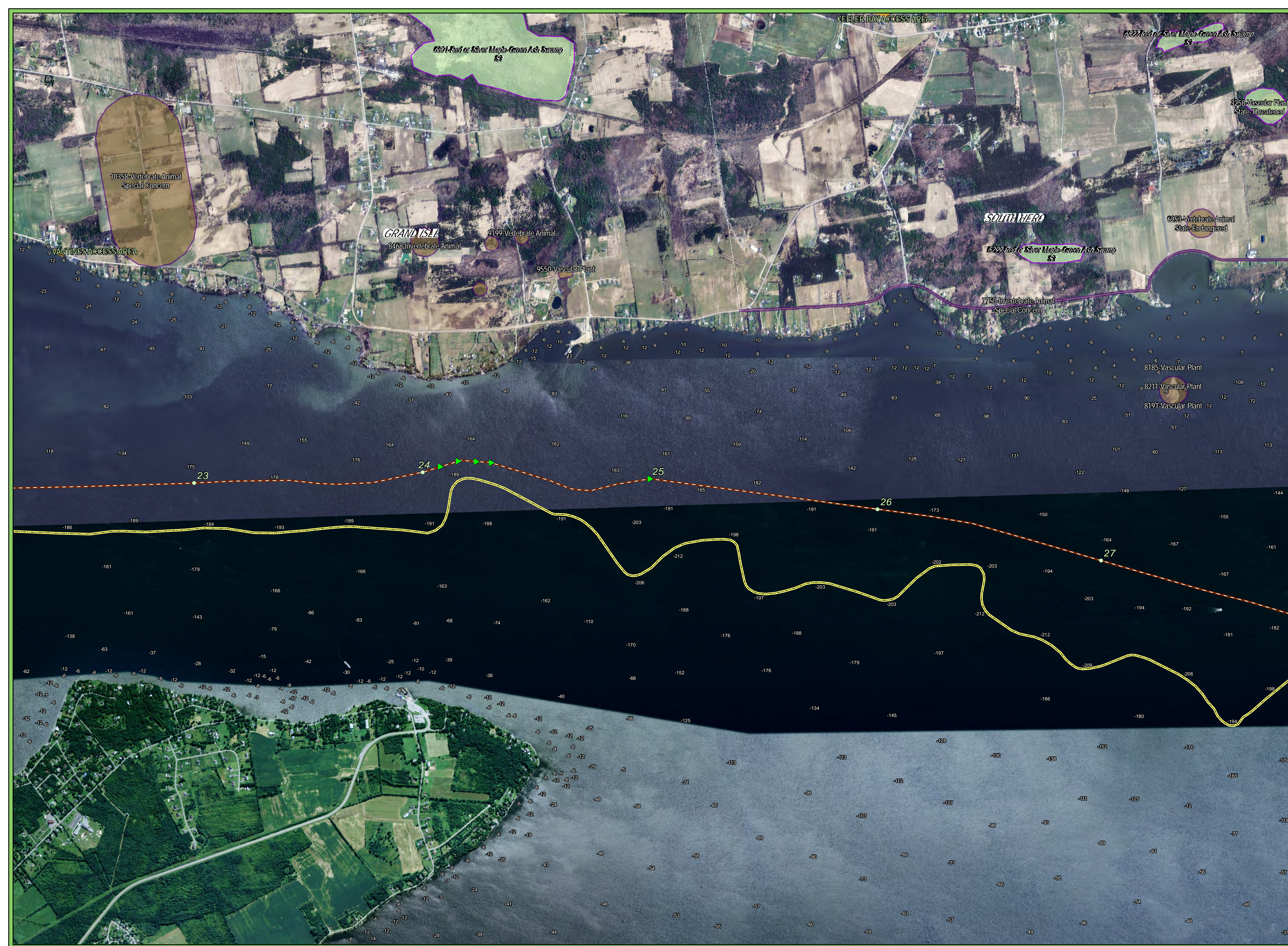
Sources: ESRI, TRC, HDR, VHB, TDI New England, VCGI



New England Clean Power Link

Lake Segment
Grand Isle, Chittenden, Addison, and Rutland Counties

L-4



Legend

- Mile Post - Whole
- ▼ Utility Crossing (Approximate)
- Proposed Overland Cable
- - - Proposed Lake HDD

Proposed Lake Cable Construction Method

- Diver Lay Installation
- Install on Bottom
- Jet Plow Installation
- Shear Plow Installation

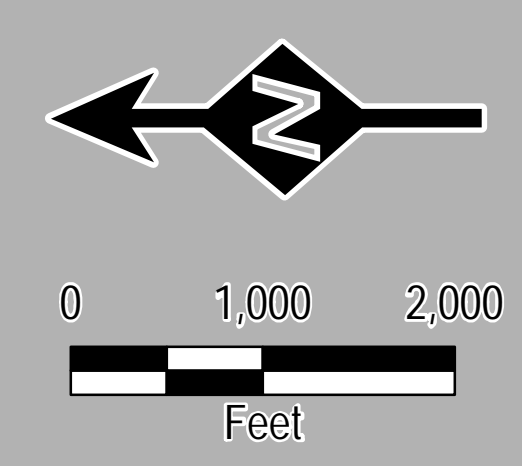
Proposed Lake Cable Construction Method

- - - VT Town Boundary (VCGI)
- - - NY State Boundary (NY GIS Program Office)
- Wildlife Management Areas
- Public & Conserved Lands
- Natural Areas (ANR)

NHI Element Occurrence (VTFW)

- RTE's
- Natural Community

Sources: ESRI, TRC, HDR, VHB, TDI New England, VCGI

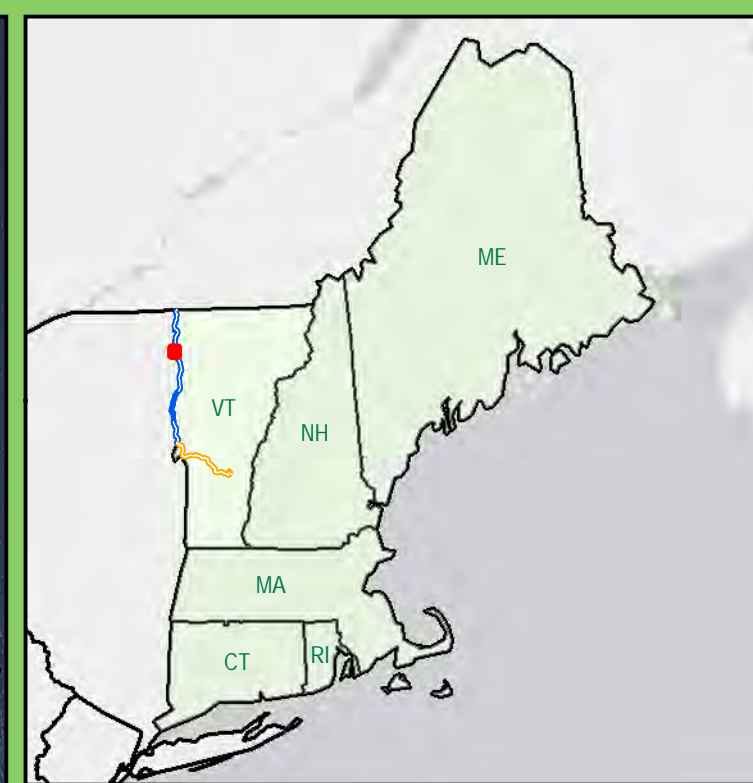
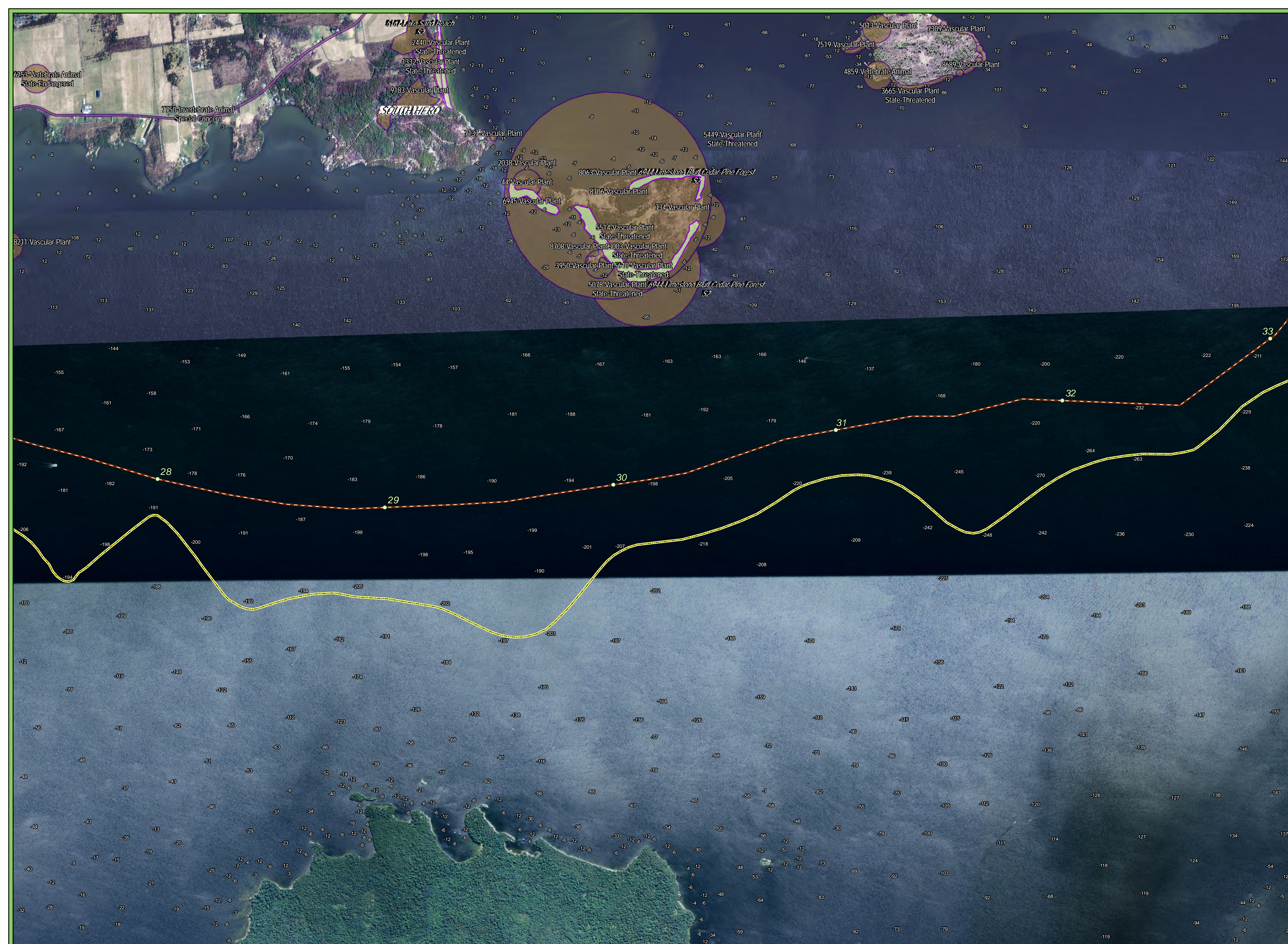


TDI New England
 A Blackstone Portfolio Company

New England Clean Power Link

Lake Segment
Grand Isle, Chittenden, Addison, and Rutland Counties

L-5



Legend

- Mile Post - Whole
- ▼ Utility Crossing (Approximate)
- Proposed Overland Cable
- Proposed Lake HDD

Proposed Lake Cable Construction Method

- Diver Lay Installation
- Install on Bottom
- Jet Plow Installation
- Shear Plow Installation

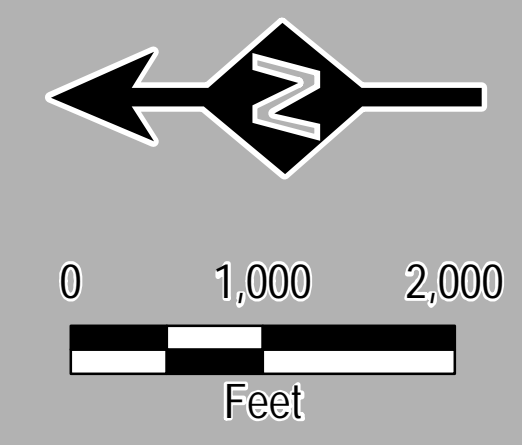
Proposed Lake Cable Construction Method

- VT Town Boundary (VCGI)
- NY State Boundary (NY GIS Program Office)
- Wildlife Management Areas
- Public & Conserved Lands
- Natural Areas (ANR)

NHI Element Occurrence (VTFW)

- RTE's
- Natural Community

Sources: ESRI, TRC, HDR, VHB, TDI New England, VCGI



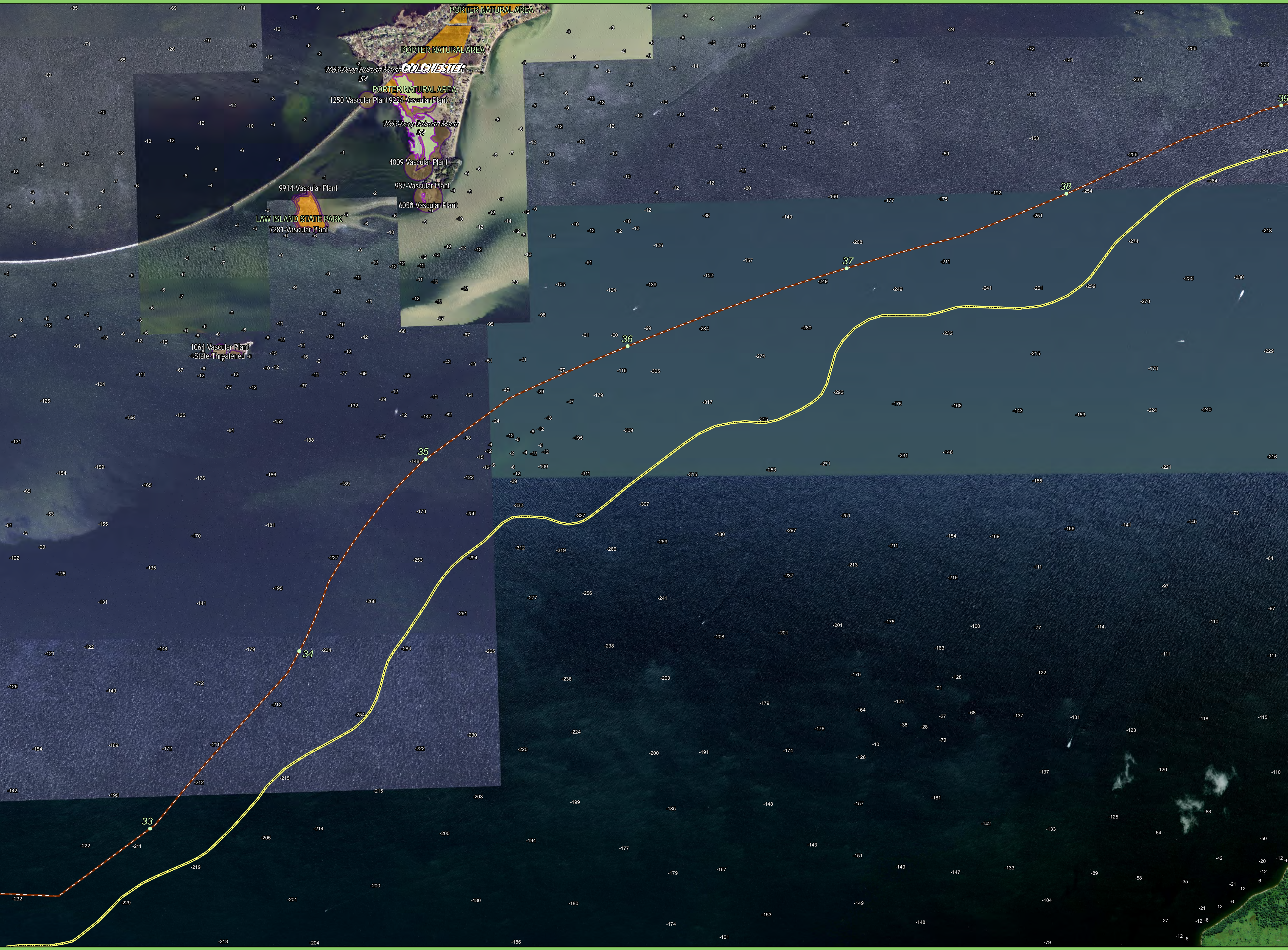
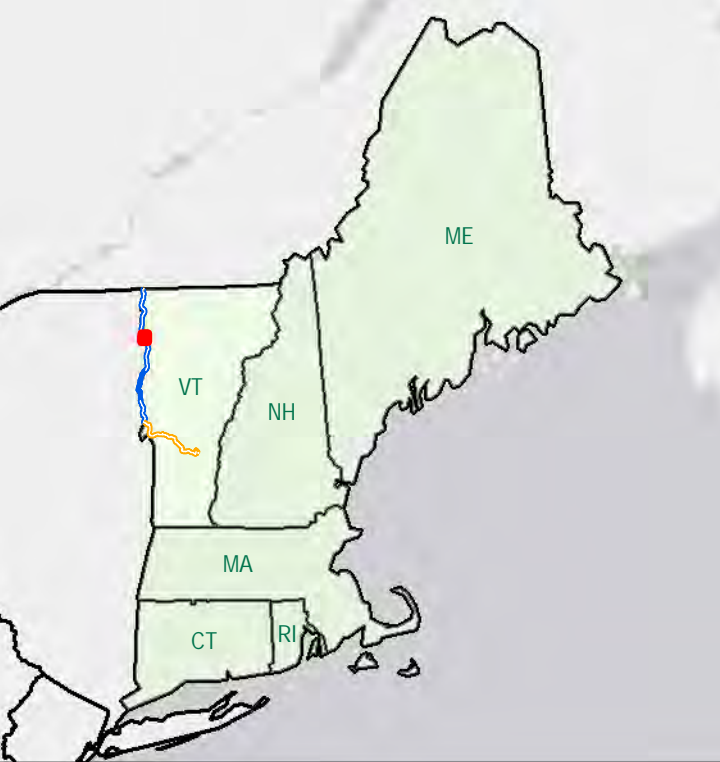
TDI New England
A Blackstone Portfolio Company

New England Clean Power Link

Lake Segment
Grand Isle, Chittenden, Addison, and Rutland Counties

L-6

Created: 7/8/2015 14 Gabriel Drive
Augusta, ME 04330



Legend

- Mile Post - Whole
- Utility Crossing (Approximate)
- Proposed Overland Cable
- Proposed Lake HDD

Proposed Lake Cable Construction Method

- Diver Lay Installation
- Install on Bottom
- Jet Plow Installation
- Shear Plow Installation

VT Town Boundary (VCGI)

NY State Boundary (NY GIS Program Office)

Wildlife Management Areas

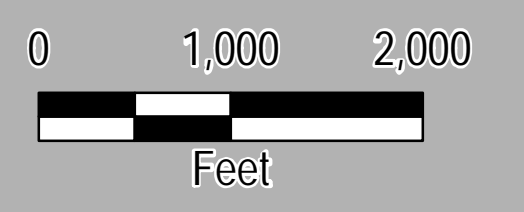
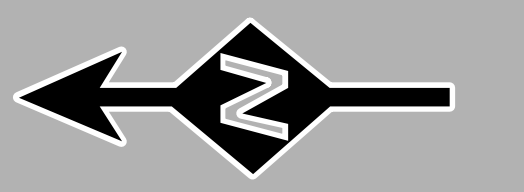
Public & Conserved Lands

Natural Areas (ANR)

NHI Element Occurrence (VTFW)

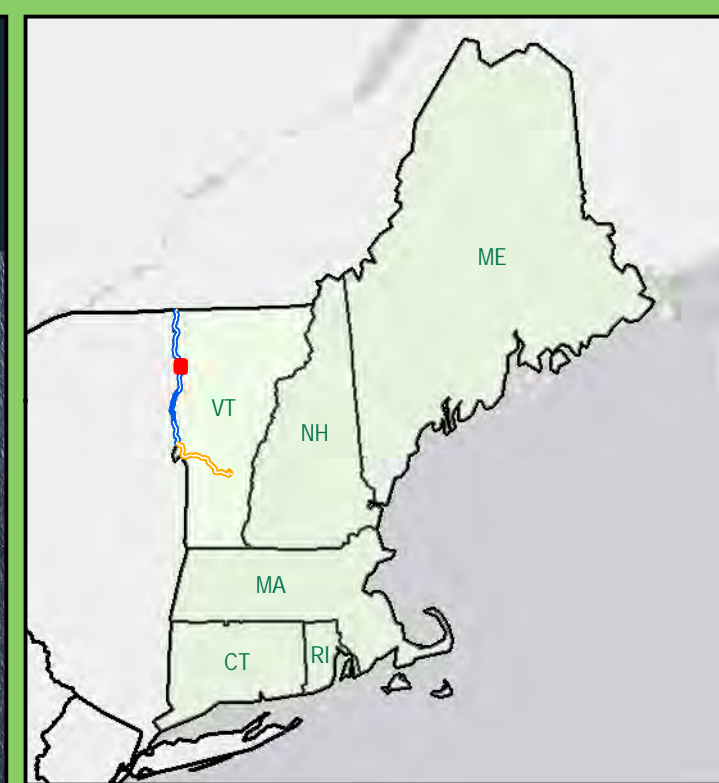
- RTE's
- Natural Community

Sources: ESRI, TRC, HDR, VHB, TDI New England, VCGI



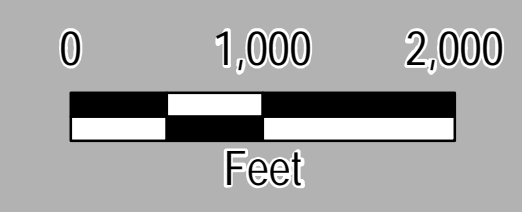
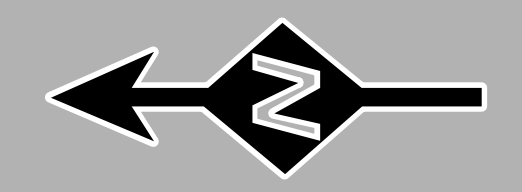
New England Clean Power Link

Lake Segment
Grand Isle, Chittenden, Addison, and Rutland Counties
L-7



- Legend**
- Mile Post - Whole
 - ▼ Utility Crossing (Approximate)
 - Proposed Overland Cable
 - Proposed Lake HDD
- Proposed Lake Cable Construction Method**
- Diver Lay Installation
 - Install on Bottom
 - Jet Plow Installation
 - Shear Plow Installation
- Proposed Lake Cable Construction Method**
- VT Town Boundary (VCGI)
 - NY State Boundary (NY GIS Program Office)
 - ▨ Wildlife Management Areas
 - Public & Conserved Lands
 - ▨ Natural Areas (ANR)
- NHI Element Occurrence (VTFW)**
- RTE's
 - Natural Community

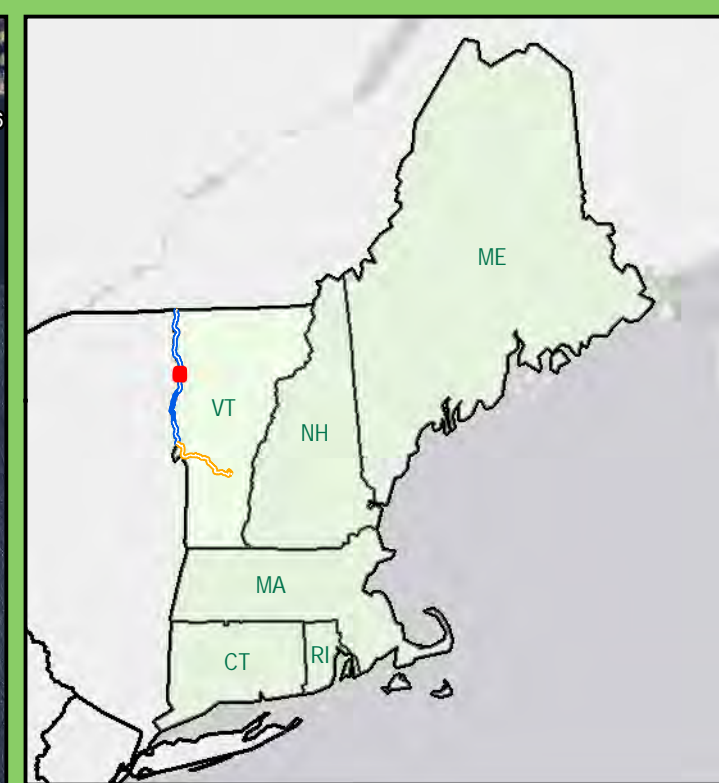
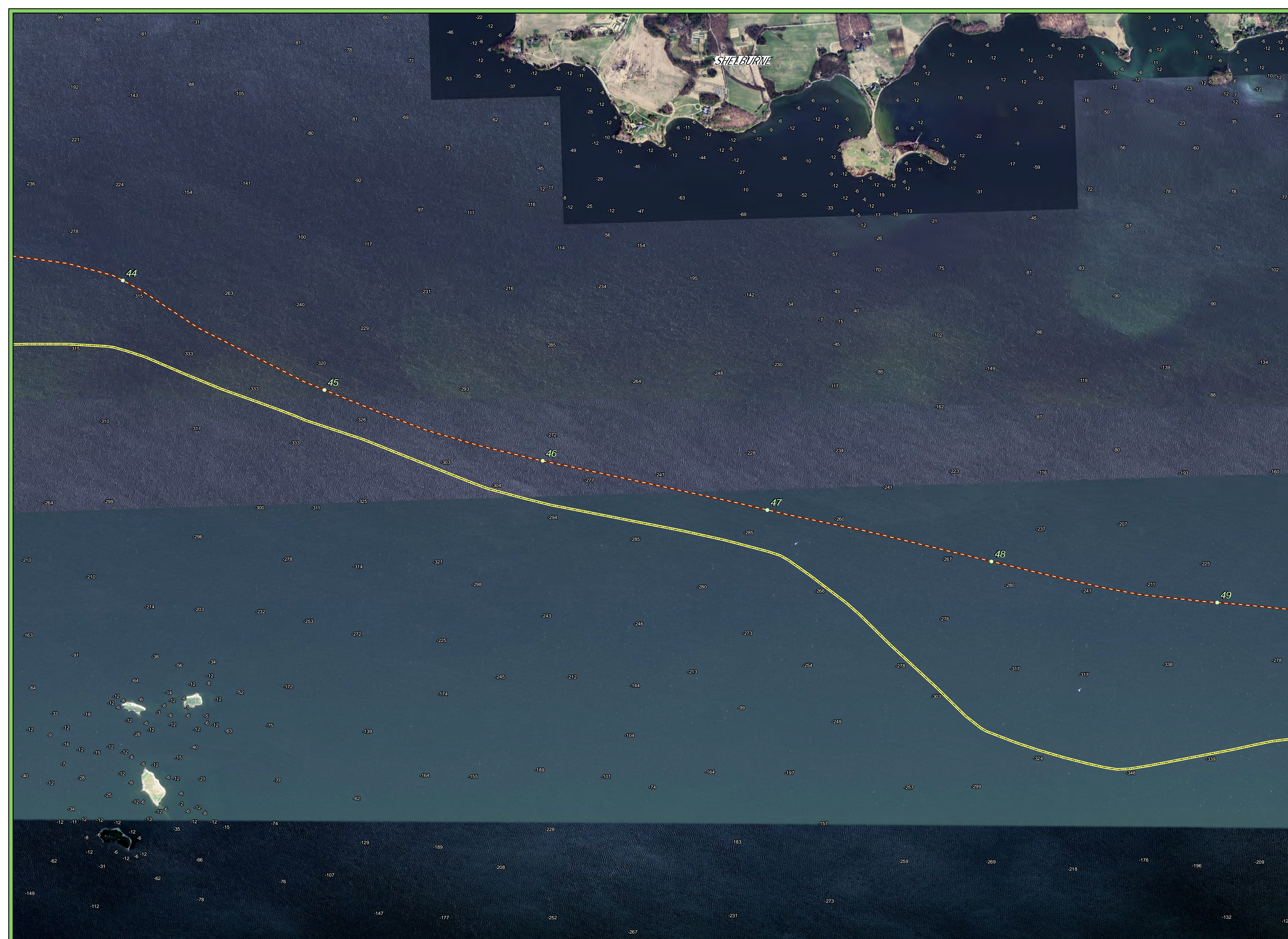
Sources: ESRI, TRC, HDR, VHB, TDI New England, VCGI



New England Clean Power Link

Lake Segment
Grand Isle, Chittenden, Addison,
and Rutland Counties

L-8



Legend

- Mile Post - Whole
- ▼ Utility Crossing (Approximate)
- Proposed Overland Cable
- Proposed Lake HDD

Proposed Lake Cable Construction Method

- Diver Lay Installation
- Install on Bottom
- Jet Plow Installation
- Shear Plow Installation

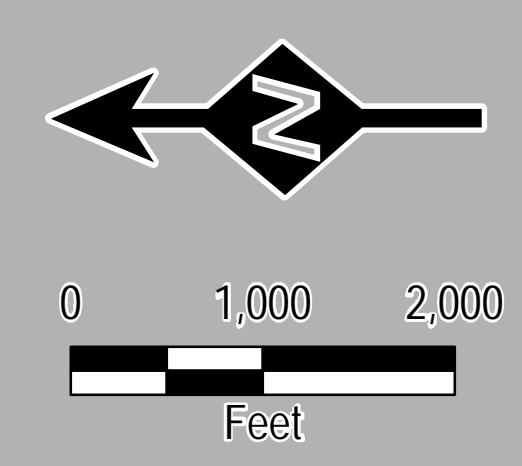
Proposed Lake Cable Construction Method

- VT Town Boundary (VCGI)
- NY State Boundary (NY GIS Program Office)
- Wildlife Management Areas
- Public & Conserved Lands
- Natural Areas (ANR)

NHI Element Occurrence (VTFW)

- RTE's
- Natural Community

Sources: ESRI, TRC, HDR, VHB, TDI New England, VCGI

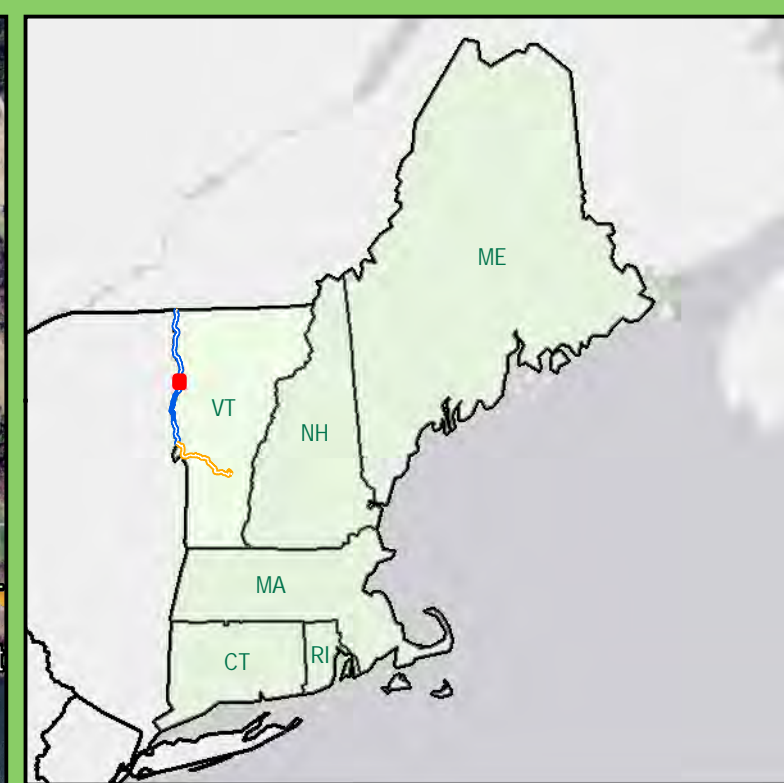
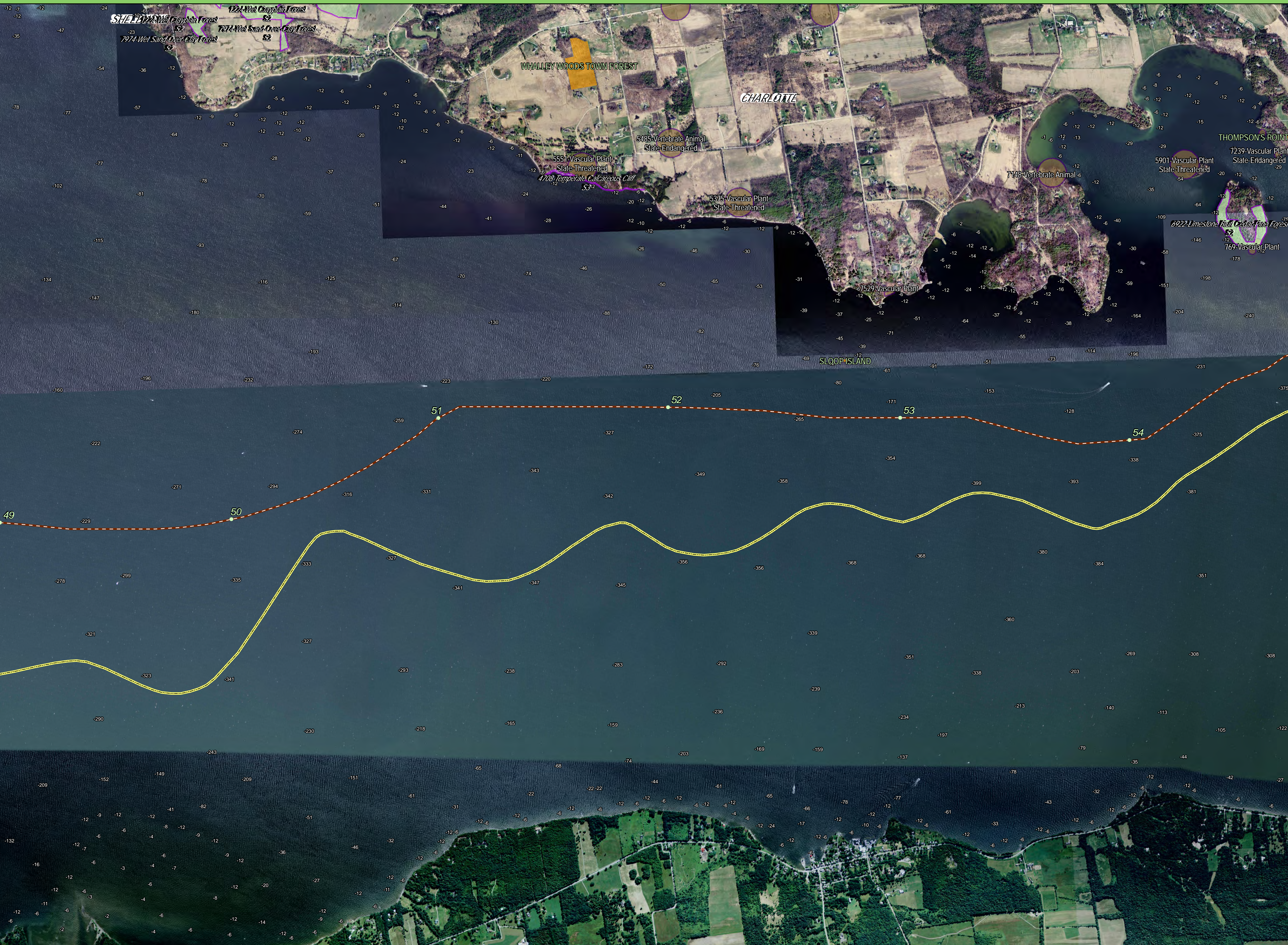


TDI New England
 A Blackstone Portfolio Company

New England Clean Power Link

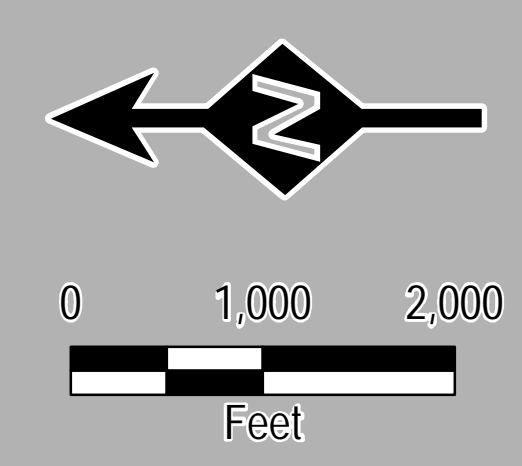
Lake Segment
Grand Isle, Chittenden, Addison, and Rutland Counties

L-9



- Legend**
- Mile Post - Whole
 - ▼ Utility Crossing (Approximate)
 - Proposed Overland Cable
 - Proposed Lake HDD
- Proposed Lake Cable Construction Method**
- Diver Lay Installation
 - Install on Bottom
 - Jet Plow Installation
 - Shear Plow Installation
- Proposed Lake Cable**
- VT Town Boundary (VCGI)
 - NY State Boundary (NY GIS Program Office)
 - Wildlife Management Areas
 - Public & Conserved Lands
 - Natural Areas (ANR)
- NHI Element Occurrence (VTFW)**
- RTE's
 - Natural Community

Sources: ESRI, TRC, HDR, VHB, TDI New England, VCGI



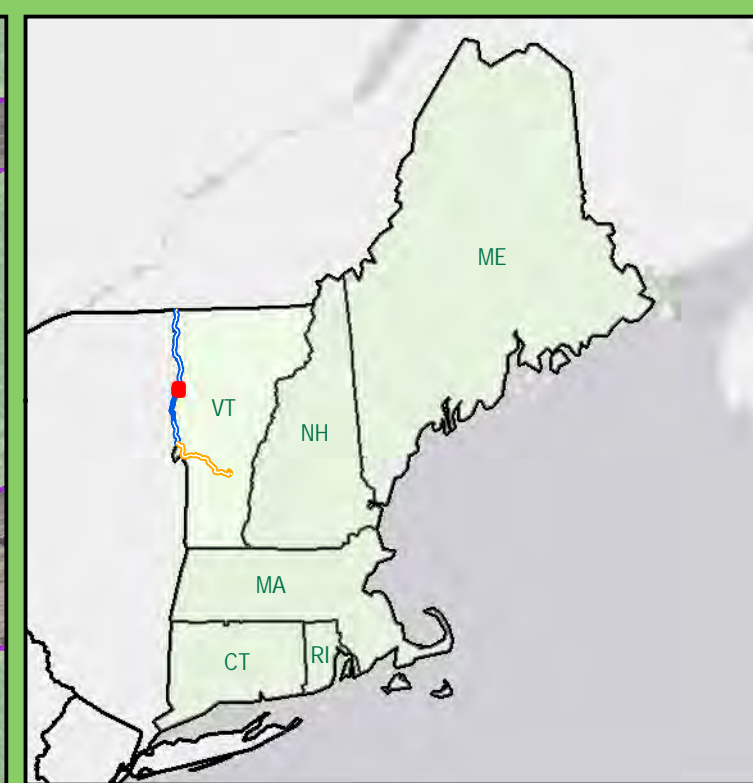
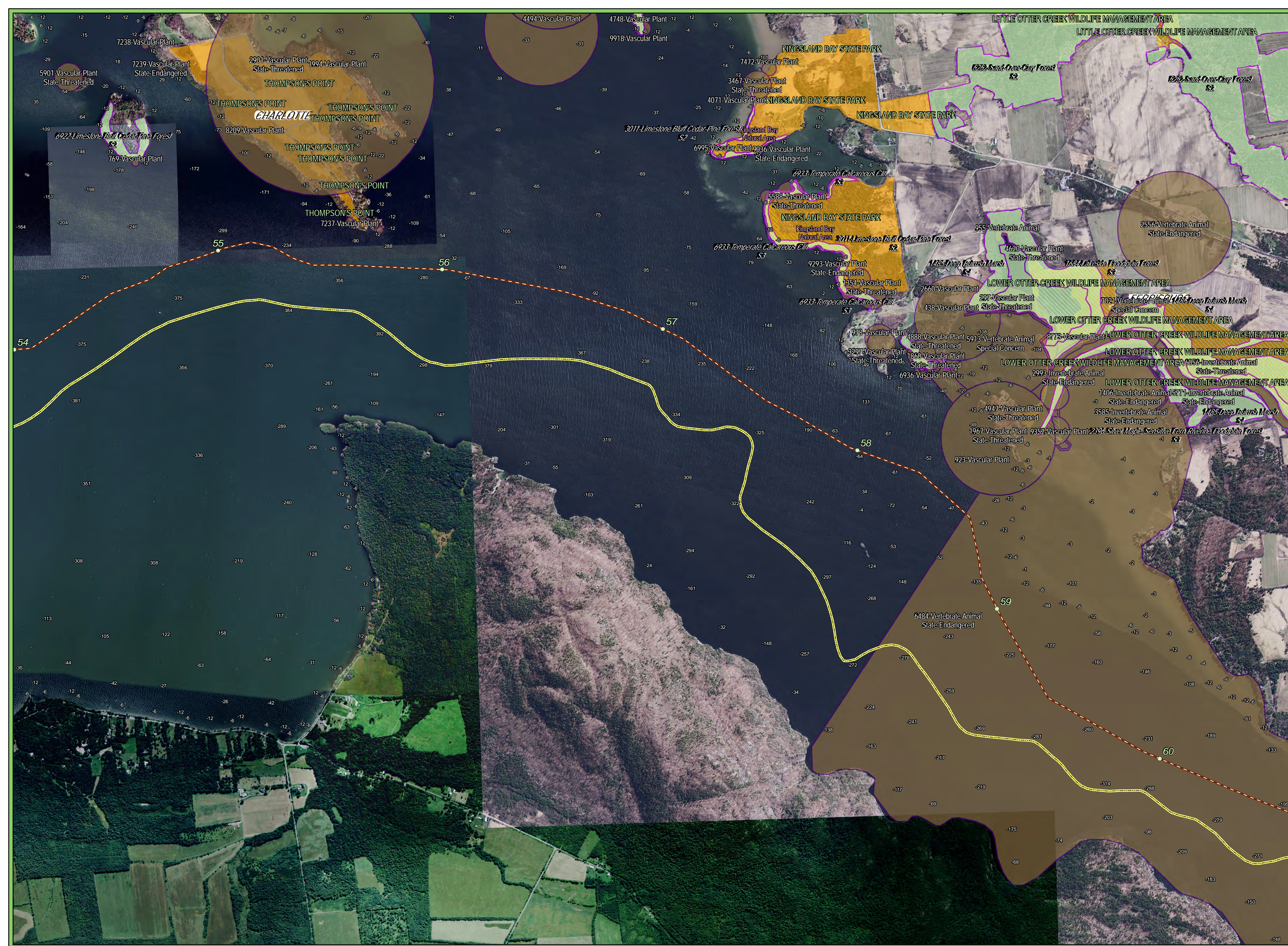
TDI New England
 A Blackstone Portfolio Company

New England Clean Power Link

Lake Segment
Grand Isle, Chittenden, Addison, and Rutland Counties

L-10

Created: 7/8/2015 14 Gabriel Drive
 Augusta, ME 04330



Legend

- Mile Post - Whole
- ▼ Utility Crossing (Approximate)
- Proposed Overland Cable
- Proposed Lake HDD

Proposed Lake Cable Construction Method

- Diver Lay Installation
- Install on Bottom
- Jet Plow Installation
- Shear Plow Installation

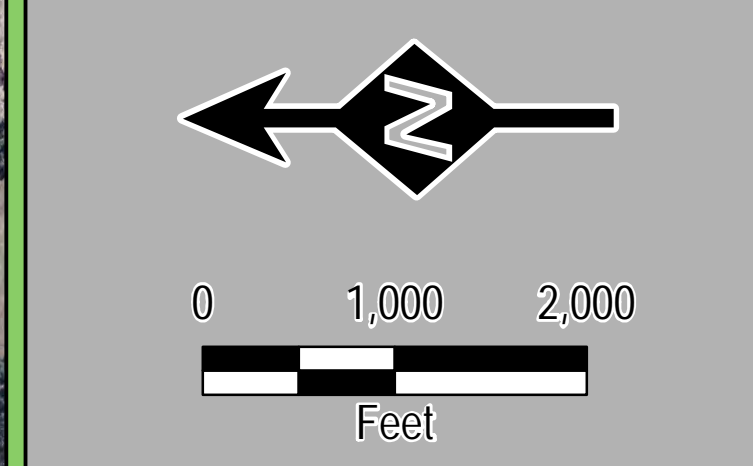
Other Features

- VT Town Boundary (VCGI)
- NY State Boundary (NY GIS Program Office)
- Wildlife Management Areas
- Public & Conserved Lands
- Natural Areas (ANR)

NHI Element Occurrence (VTFW)

- RTE's
- Natural Community

Sources: ESRI, TRC, HDR, VHB, TDI New England, VCGI



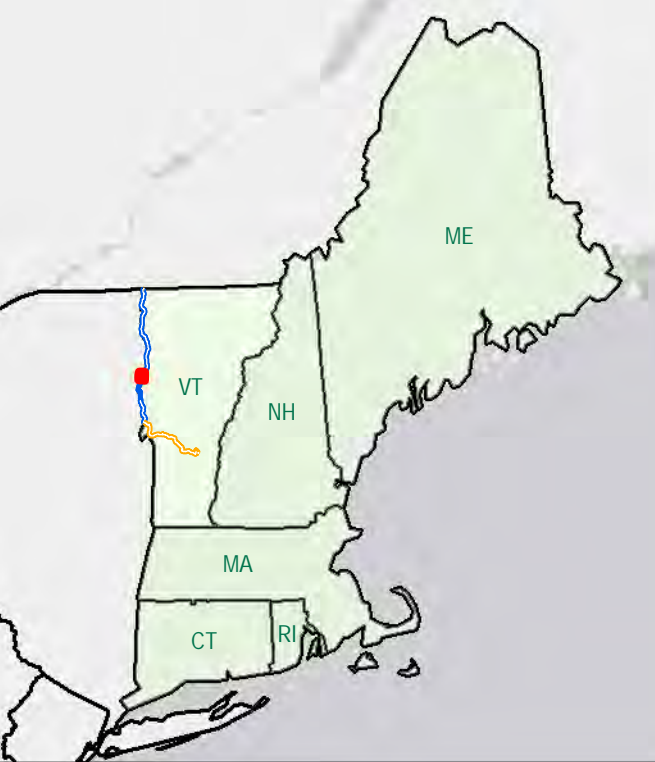
TDI New England
A Blackstone Portfolio Company

New England Clean Power Link

Lake Segment
Grand Isle, Chittenden, Addison, and Rutland Counties

L-11

Created: 7/8/2015 14 Gabriel Drive
Augusta, ME 04330



Legend

- Mile Post - Whole
- ▼ Utility Crossing (Approximate)
- Proposed Overland Cable
- Proposed Lake HDD
- Proposed Lake Cable Construction Method**
- Diver Lay Installation
- Install on Bottom
- Jet Plow Installation
- Shear Plow Installation
- VT Town Boundary (VCGI)
- NY State Boundary (NY GIS Program Office)
- Wildlife Management Areas
- Public & Conserved Lands
- Natural Areas (ANR)
- NHI Element Occurrence (VTFW)**
- RTE's
- Natural Community

Sources: ESRI, TRC, HDR, VHB, TDI New England, VCGI

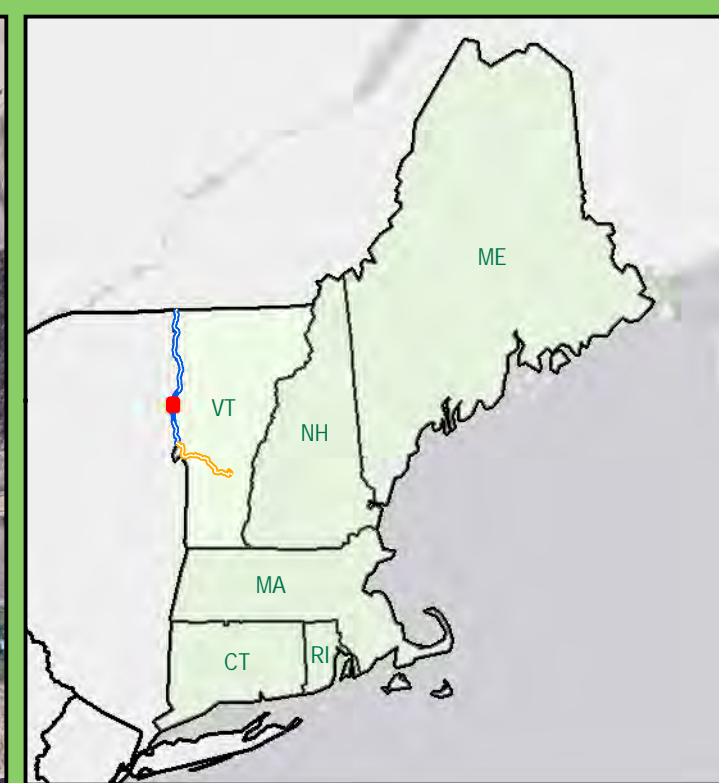


New England Clean Power Link

Lake Segment
Grand Isle, Chittenden, Addison, and Rutland Counties

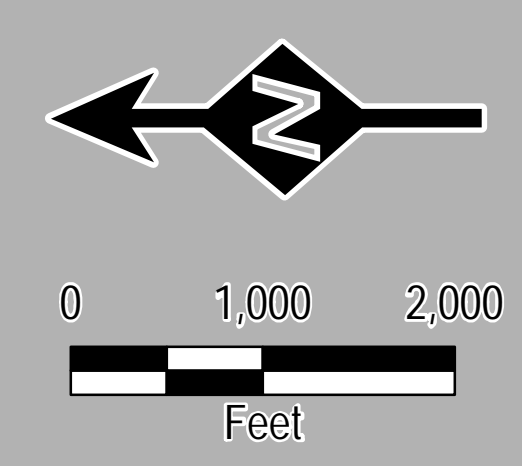
L-12





- Legend**
- Mile Post - Whole
 - ▼ Utility Crossing (Approximate)
 - Proposed Overland Cable
 - Proposed Lake HDD
- Proposed Lake Cable Construction Method**
- Diver Lay Installation
 - Install on Bottom
 - Jet Plow Installation
 - Shear Plow Installation
- Proposed Lake Cable**
- VT Town Boundary (VCGI)
 - NY State Boundary (NY GIS Program Office)
 - Wildlife Management Areas
 - Public & Conserved Lands
 - Natural Areas (ANR)
- NHI Element Occurrence (VTFW)**
- RTE's
 - Natural Community

Sources: ESRI, TRC, HDR, VHB, TDI New England, VCGI

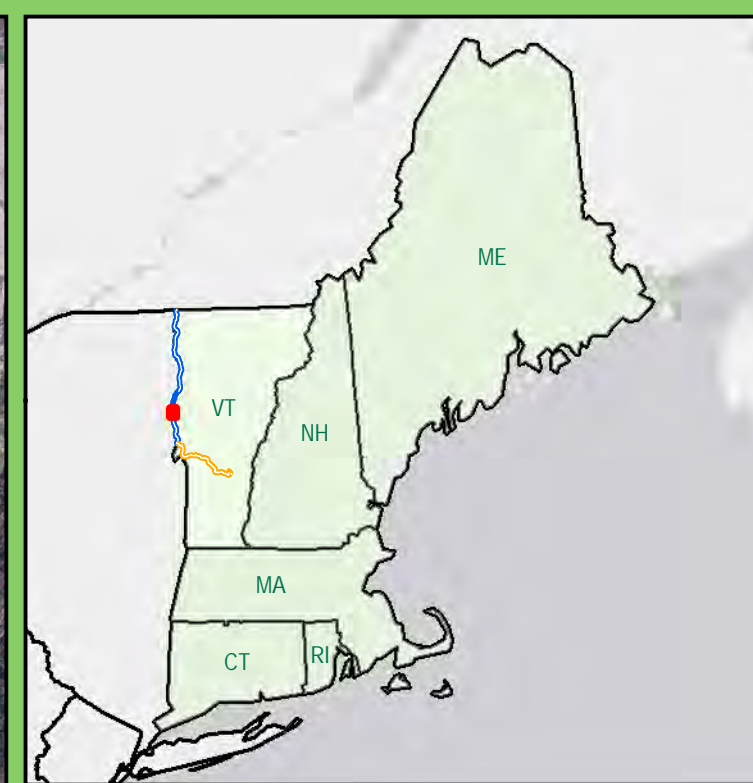


TDI New England
 A Blackstone Portfolio Company

New England Clean Power Link

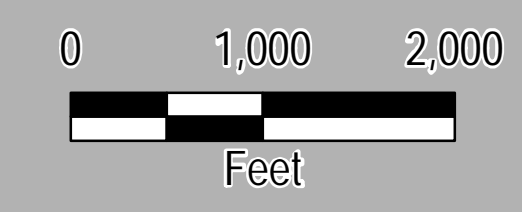
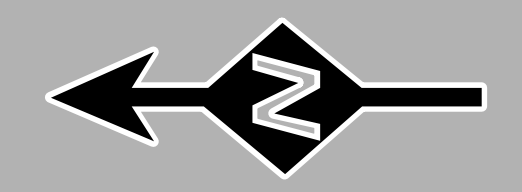
Lake Segment
Grand Isle, Chittenden, Addison, and Rutland Counties

L-13



- Legend**
- Mile Post - Whole
 - ▼ Utility Crossing (Approximate)
 - Proposed Overland Cable
 - - - Proposed Lake HDD
- Proposed Lake Cable Construction Method**
- Diver Lay Installation
 - Install on Bottom
 - Jet Plow Installation
 - Shear Plow Installation
- VT Town Boundary (VCGI)
 - NY State Boundary (NY GIS Program Office)
 - Wildlife Management Areas
 - Public & Conserved Lands
 - Natural Areas (ANR)
- NHI Element Occurrence (VTFW)**
- RTE's
 - Natural Community

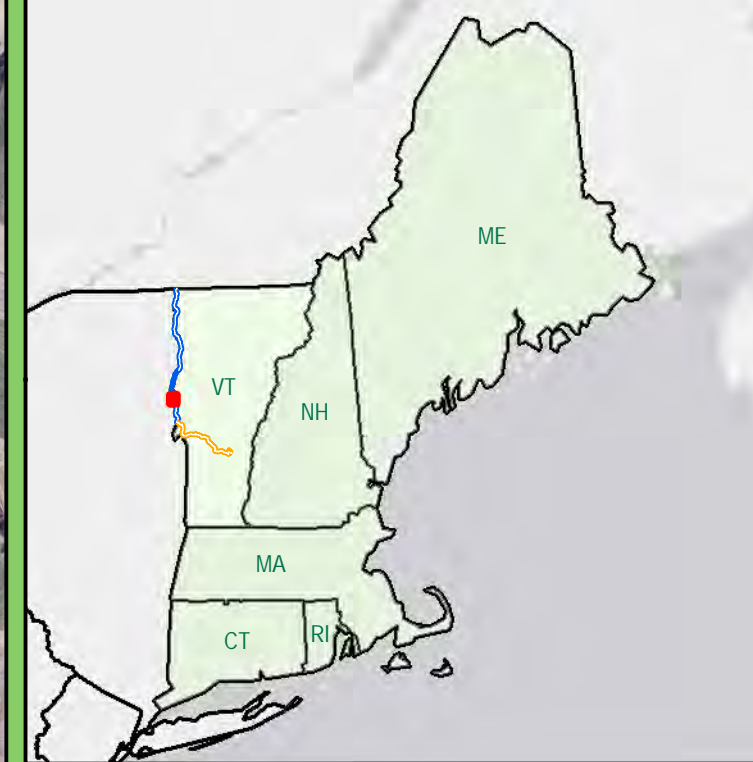
Sources: ESRI, TRC, HDR, VHB, TDI New England, VCGI



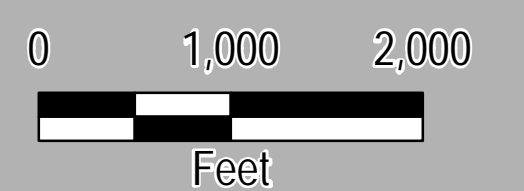
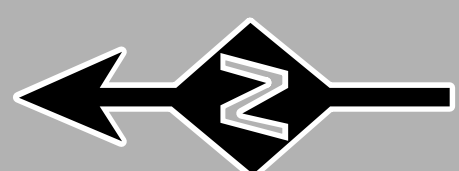
New England Clean Power Link

Lake Segment
Grand Isle, Chittenden, Addison, and Rutland Counties

L-14



- Legend**
- Mile Post - Whole
 - ▼ Utility Crossing (Approximate)
 - Proposed Overland Cable
 - - - Proposed Lake HDD
- Proposed Lake Cable Construction Method**
- Diver Lay Installation
 - Install on Bottom
 - Jet Plow Installation
 - Shear Plow Installation
- Other Features**
- VT Town Boundary (VCGI)
 - NY State Boundary (NY GIS Program Office)
 - Wildlife Management Areas
 - Public & Conserved Lands
 - Natural Areas (ANR)
- NHI Element Occurrence (VTFW)**
- RTE's
 - Natural Community
- Sources: ESRI, TRC, HDR, VHB, TDI New England, VCGI

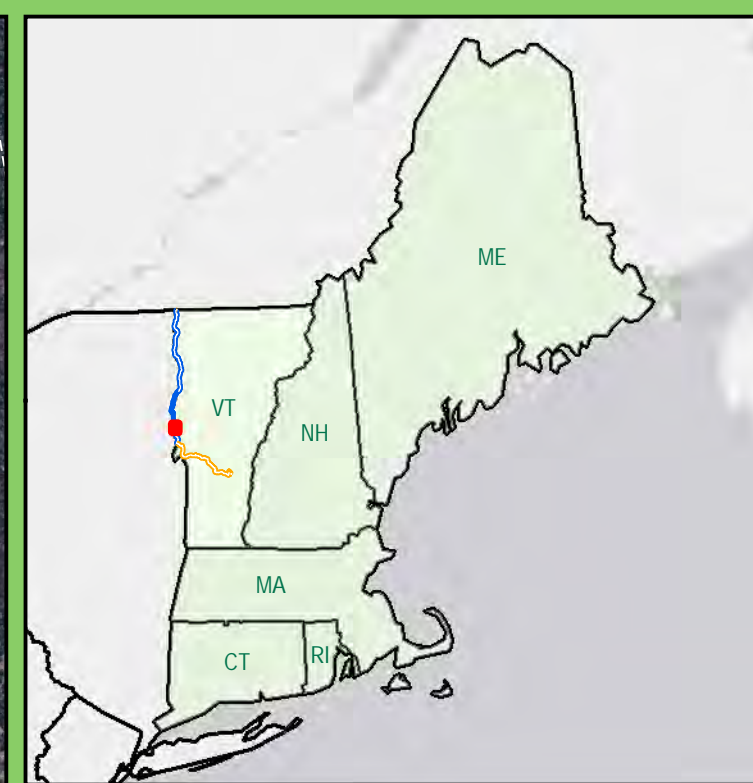
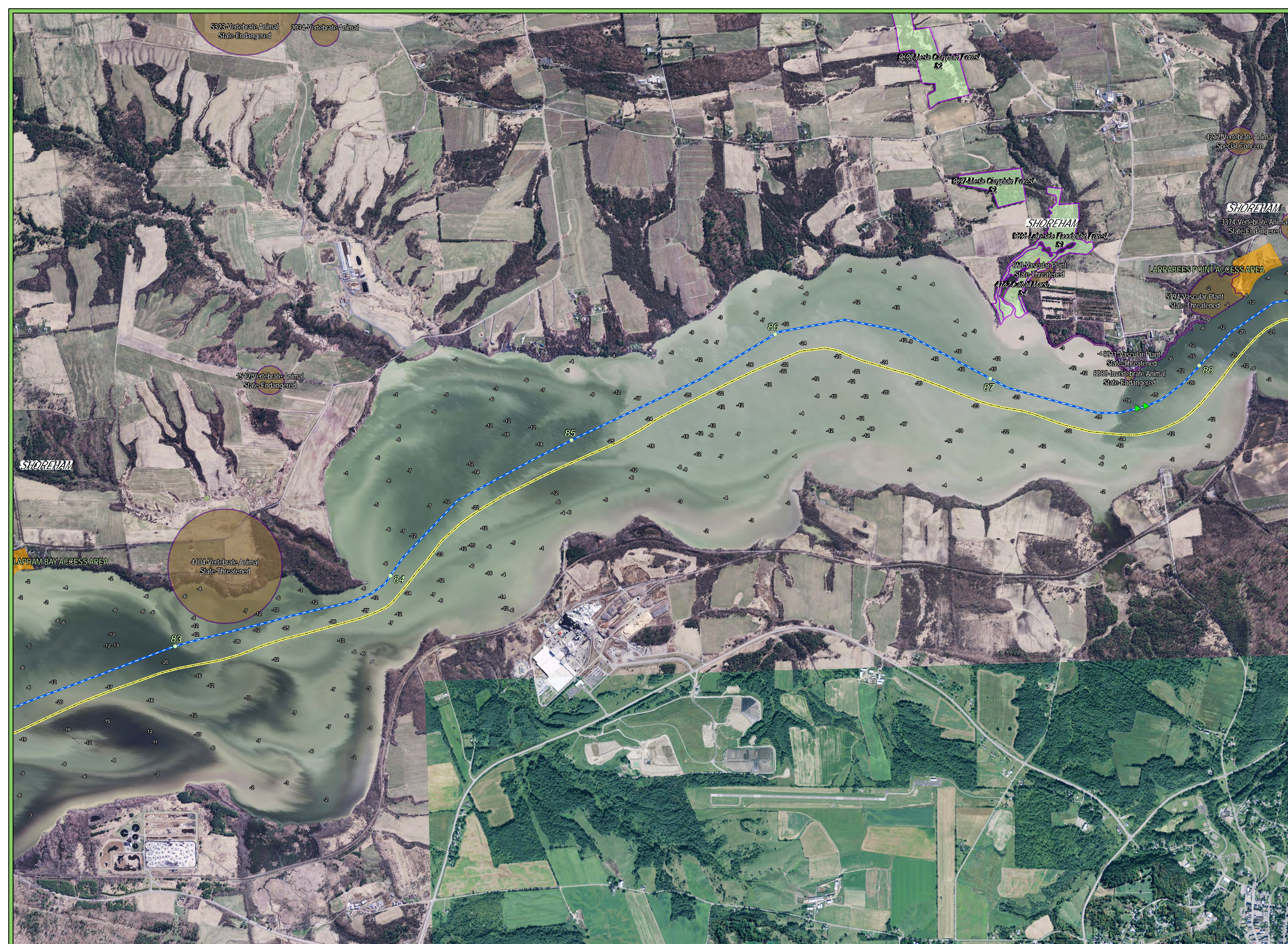


TDI New England
 A Blackstone Portfolio Company

New England Clean Power Link

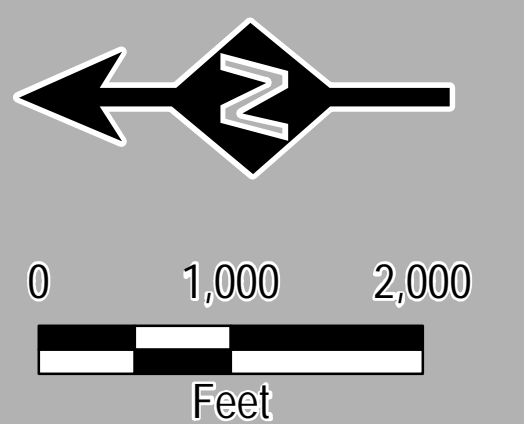
Lake Segment
Grand Isle, Chittenden, Addison, and Rutland Counties

L-15



- Legend**
- Mile Post - Whole
 - ▼ Utility Crossing (Approximate)
 - Proposed Overland Cable
 - Proposed Lake HDD
- Proposed Lake Cable Construction Method**
- Diver Lay Installation
 - Install on Bottom
 - Jet Plow Installation
 - Shear Plow Installation
- VT Town Boundary (VCGI)
 - NY State Boundary (NY GIS Program Office)
 - ▨ Wildlife Management Areas
 - Public & Conserved Lands
 - ▨ Natural Areas (ANR)
- NHI Element Occurrence (VTFW)**
- RTE's
 - Natural Community

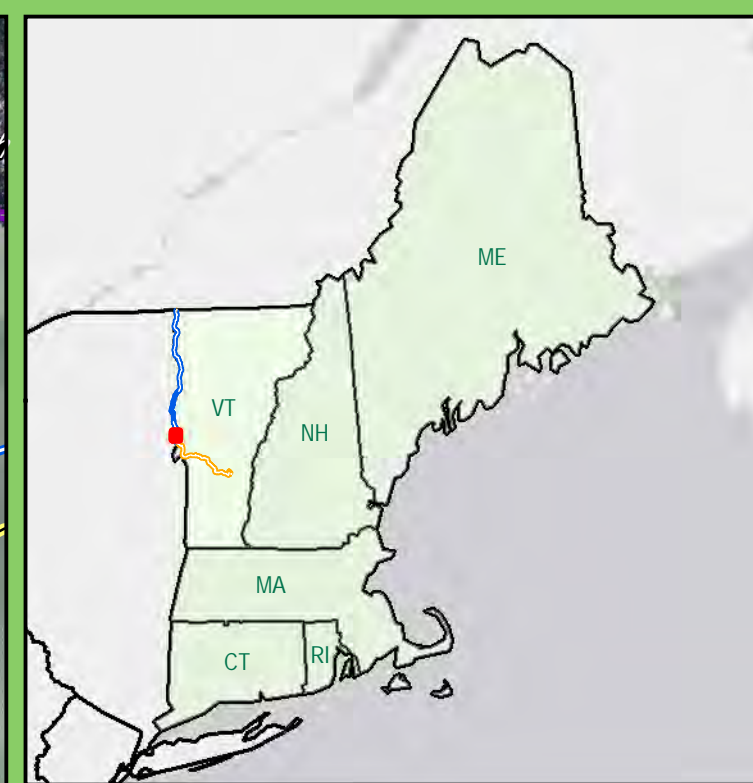
Sources: ESRI, TRC, HDR, VHB, TDI New England, VCGI



New England Clean Power Link

Lake Segment
Grand Isle, Chittenden, Addison,
and Rutland Counties

L-16



Legend

- Mile Post - Whole
- ▼ Utility Crossing (Approximate)
- Proposed Overland Cable
- Proposed Lake HDD

Proposed Lake Cable Construction Method

- Diver Lay Installation
- Install on Bottom
- Jet Plow Installation
- Shear Plow Installation

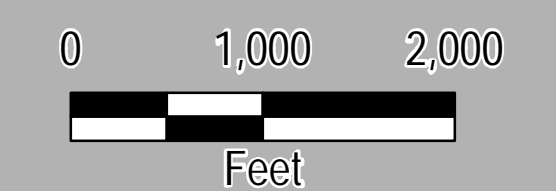
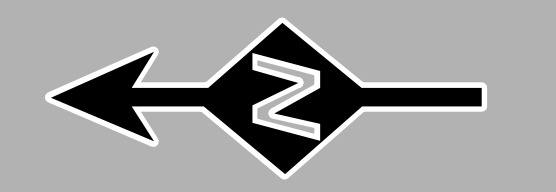
Other Features

- VT Town Boundary (VCGI)
- NY State Boundary (NY GIS Program Office)
- Wildlife Management Areas
- Public & Conserved Lands
- Natural Areas (ANR)

NHI Element Occurrence (VTFW)

- RTE's
- Natural Community

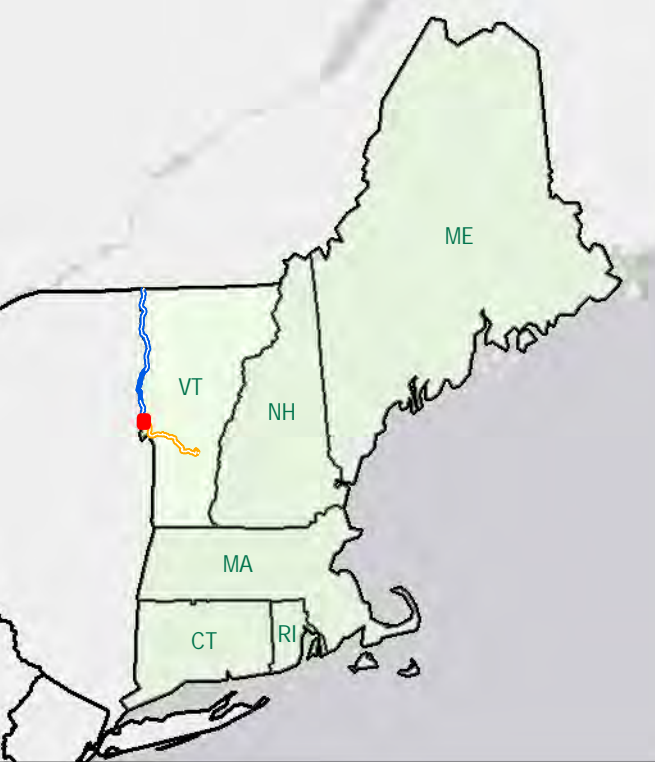
Sources: ESRI, TRC, HDR, VHB, TDI New England, VCGI



New England Clean Power Link

Lake Segment
Grand Isle, Chittenden, Addison,
and Rutland Counties

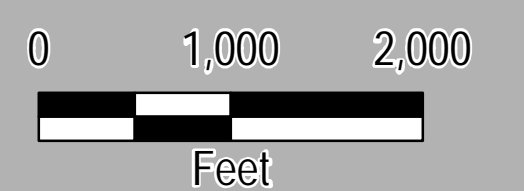
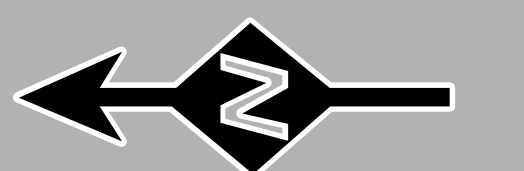
L-17



Legend

- Mile Post - Whole
- ▼ Utility Crossing (Approximate)
- Proposed Overland Cable
- - - Proposed Lake HDD
- Proposed Lake Cable Construction Method**
- Diver Lay Installation
- Install on Bottom
- Jet Plow Installation
- Shear Plow Installation
- - - VT Town Boundary (VCGI)
- - - NY State Boundary (NY GIS Program Office)
- Wildlife Management Areas
- Public & Conserved Lands
- Natural Areas (ANR)
- NHI Element Occurrence (VTFW)**
- RTE's
- Natural Community

Sources: ESRI, TRC, HDR, VHB, TDI New England, VCGI



New England Clean Power Link

Lake Segment
Grand Isle, Chittenden, Addison,
and Rutland Counties

L-18

